

# ProGuard<sup>®</sup> City Barrier

[www.safeatsite.com](http://www.safeatsite.com)



# General

Tested according to EN 1317-2. Approved configurations is shown in the table below.

Barrier length	2,6 m
Containment level	T2
Working width class	W6
Working width	1,95 m
Dynamic deflection	1,55 m
Impact Severity Level (ASI)	A
MIN installation length, unanchored*	36,5 m
Radii capacity	25,2 m
* Minimum 12,9 m of barriers must be installed prior to, and after the work zone	

Installation and handling of City Barriers must be done by qualified personnel.

Always carry out a risk assessment and method description before installation. Inspect and identify possible wear or damages on the products before usage. Never use products that are damaged, rusty or are in general bad condition.

Before installation should the following be inspected and passed for the products to be used:

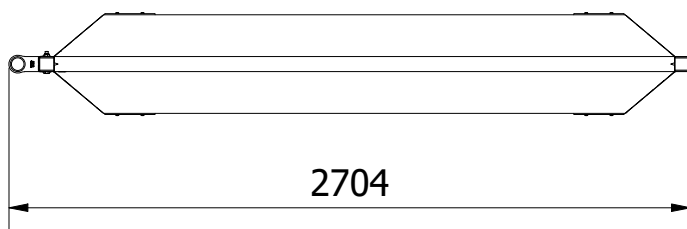
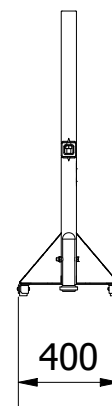
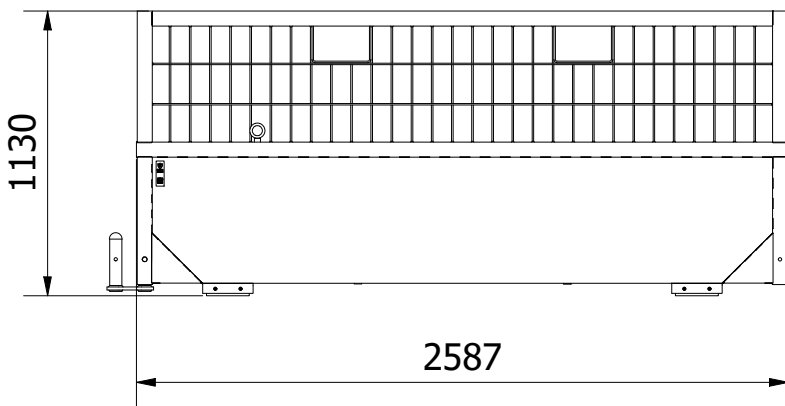
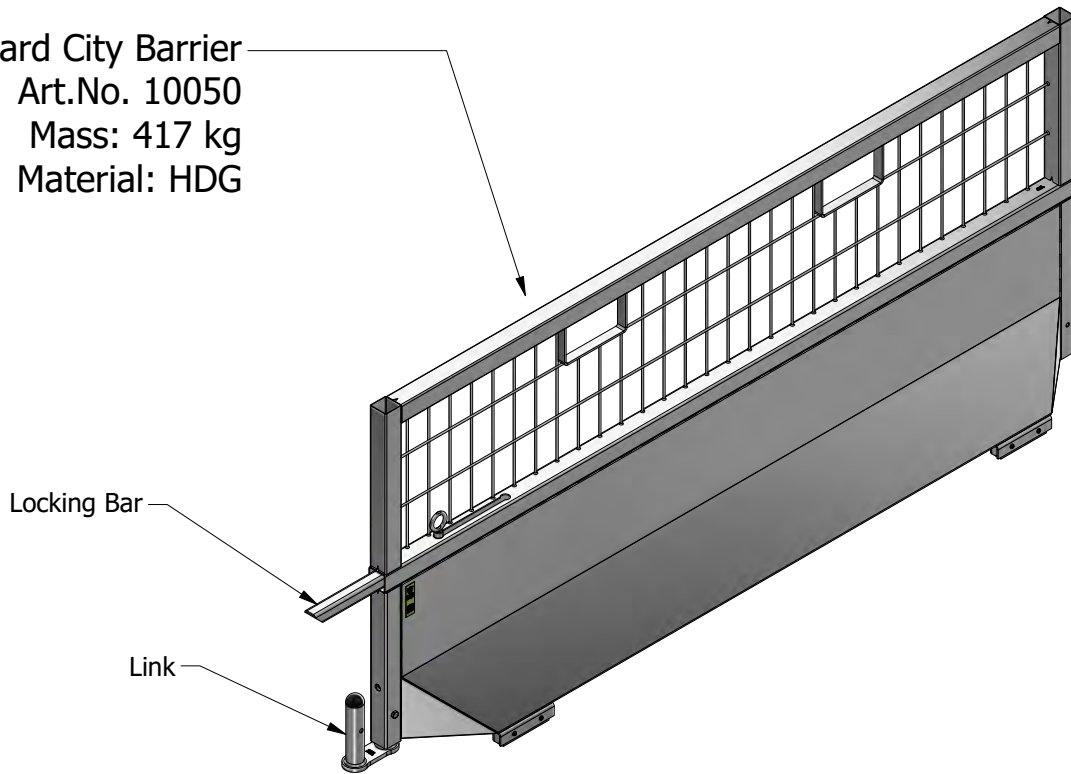
- No damages, cracks, or major deformations on the Locking Bar
- No damages, cracks, or major deformations on the Link
- Minimum 3 mm protruding of the Rubber Foot

Use suitable tools and personal safety gear when handling the products. Always check that lifting material or machines have enough lifting capacity for the task.

Barriers are intended to be used on asphalt. Make sure that the ground is free from dirt, debris and sand before installation.

# ProGuard City Barrier

ProGuard City Barrier  
Art.No. 10050  
Mass: 417 kg  
Material: HDG

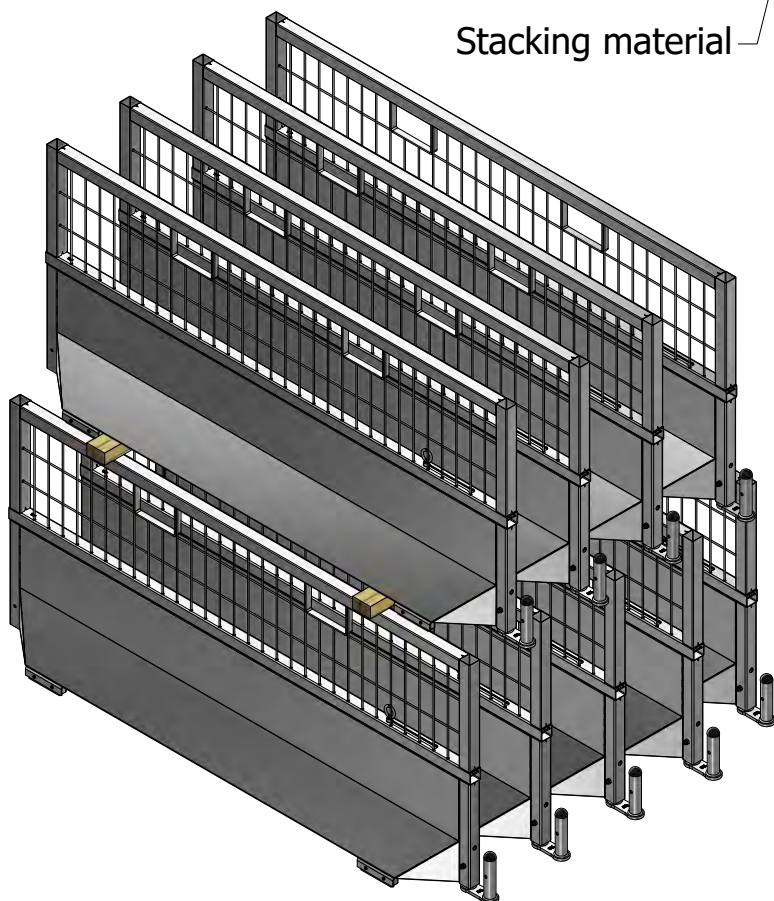
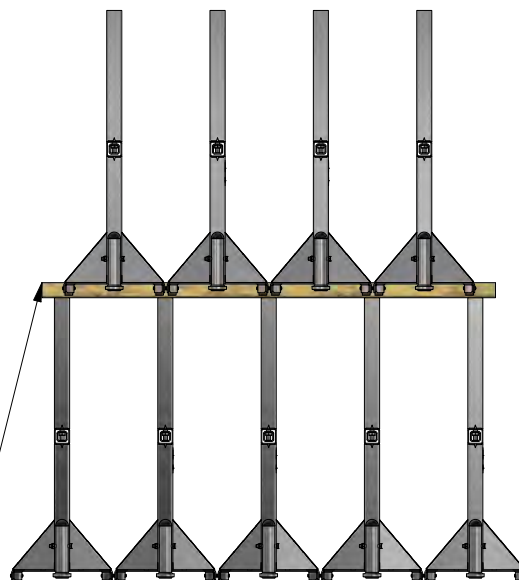


# Storage and handling



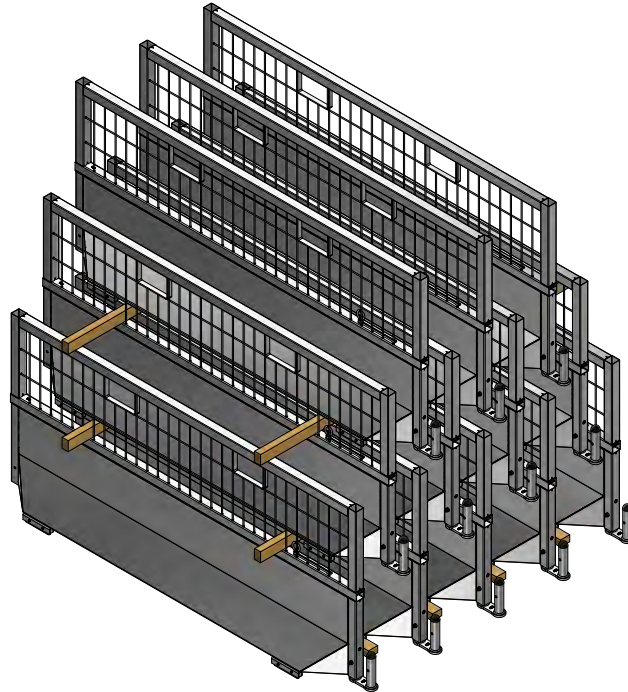
MAX x 2

Stacking material



# Storage and handling

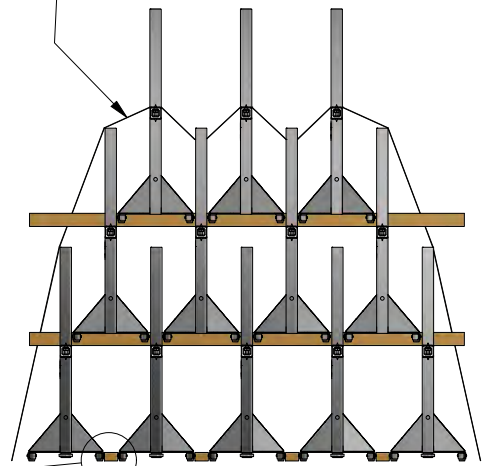
Alt 2.



Standing 45x70 - 2300mm



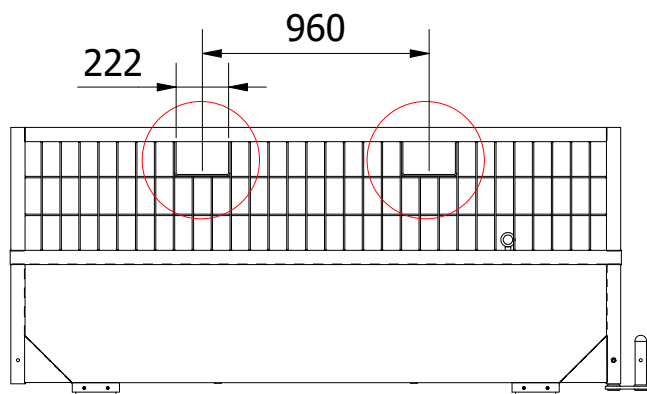
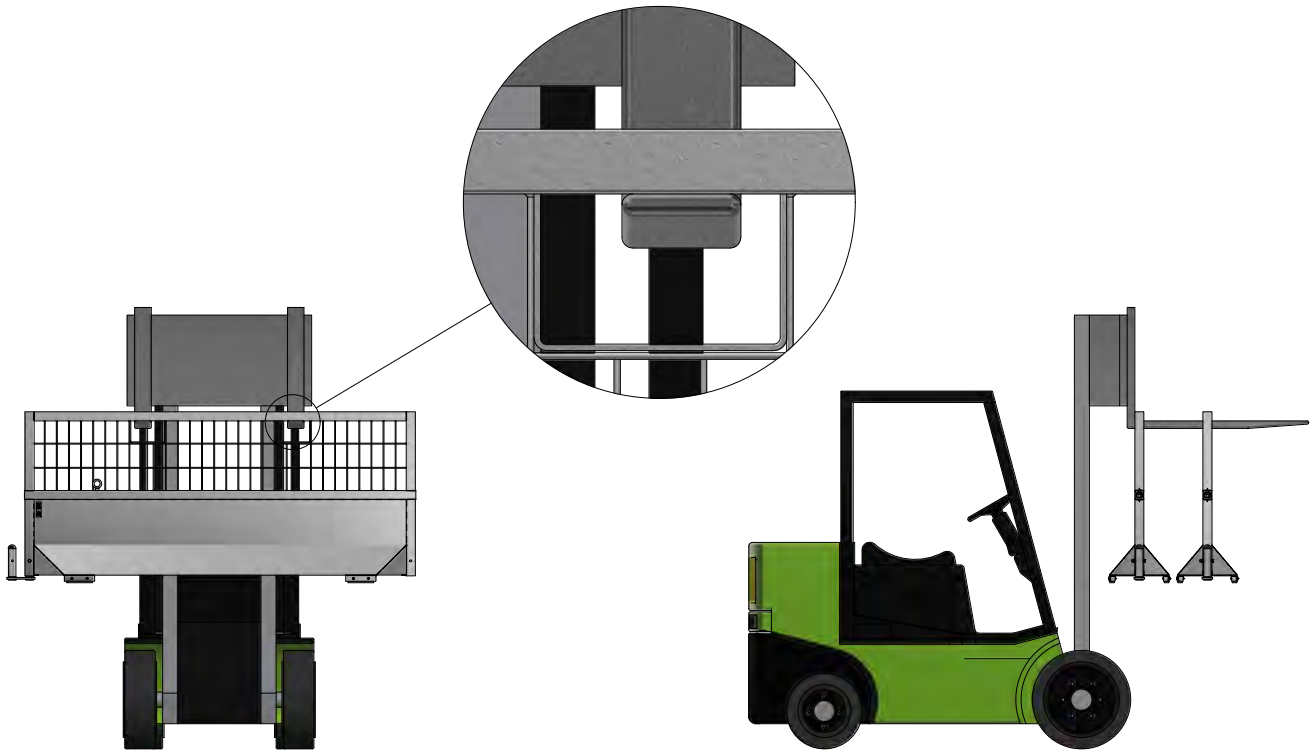
Secure during transport



Flat 45x70

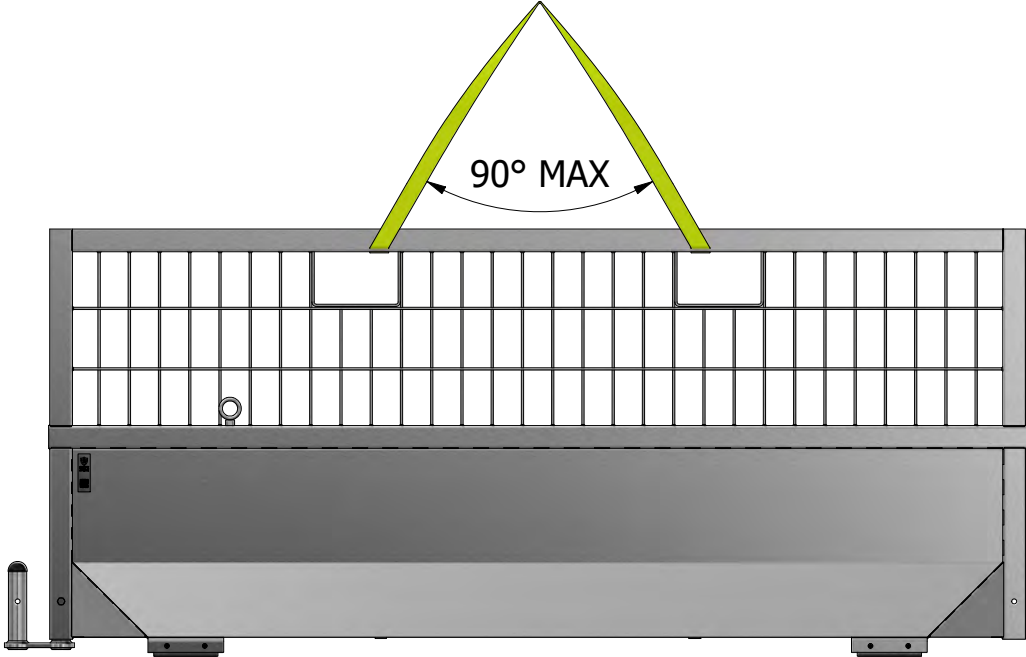
# Handling - Lifting

Alt. 1 - Forklift/Wheel Loader



# Handling - Lifting

Alt. 2 - Sling



 417 kg



# Handling - Lifting

## Alt. 3 - Lifting hook

City Lifting Hook

Art. nr 10200

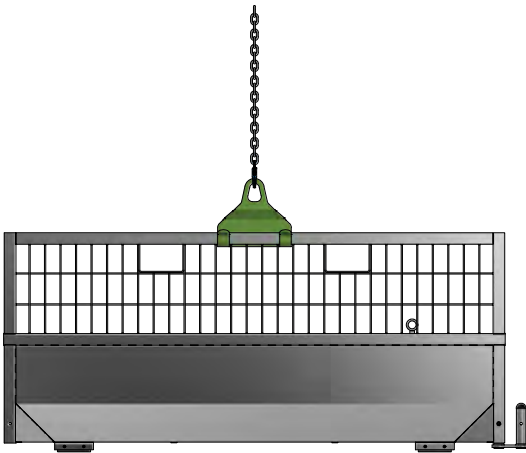
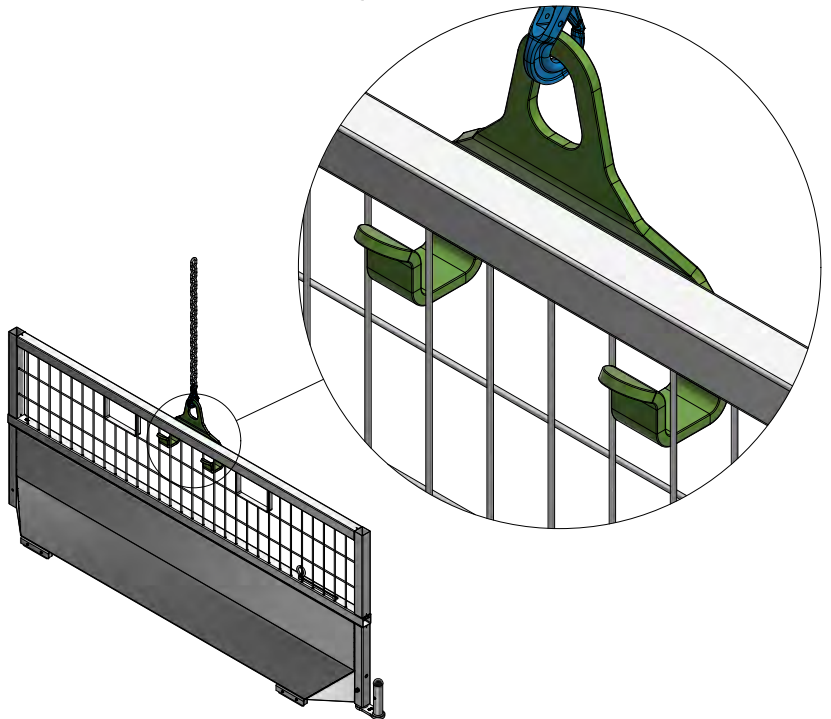
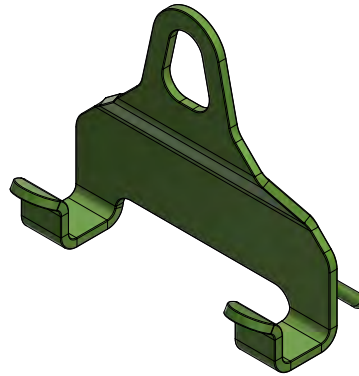
Max lifting capacity 500 kg



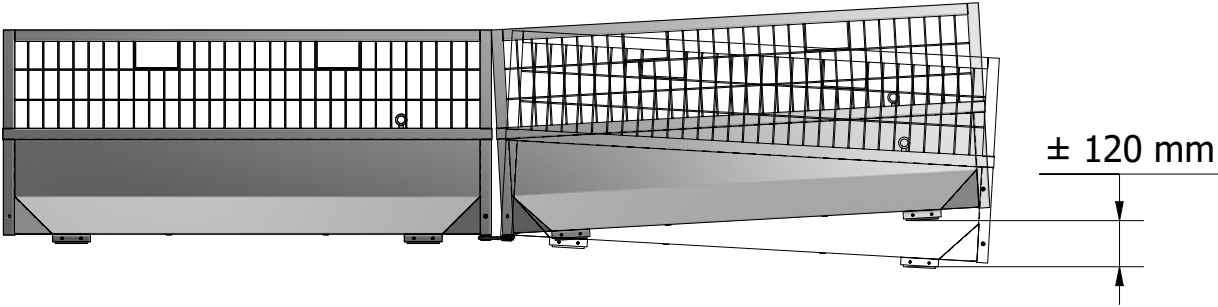
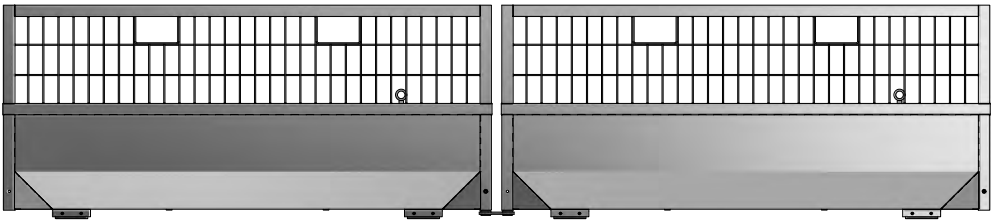
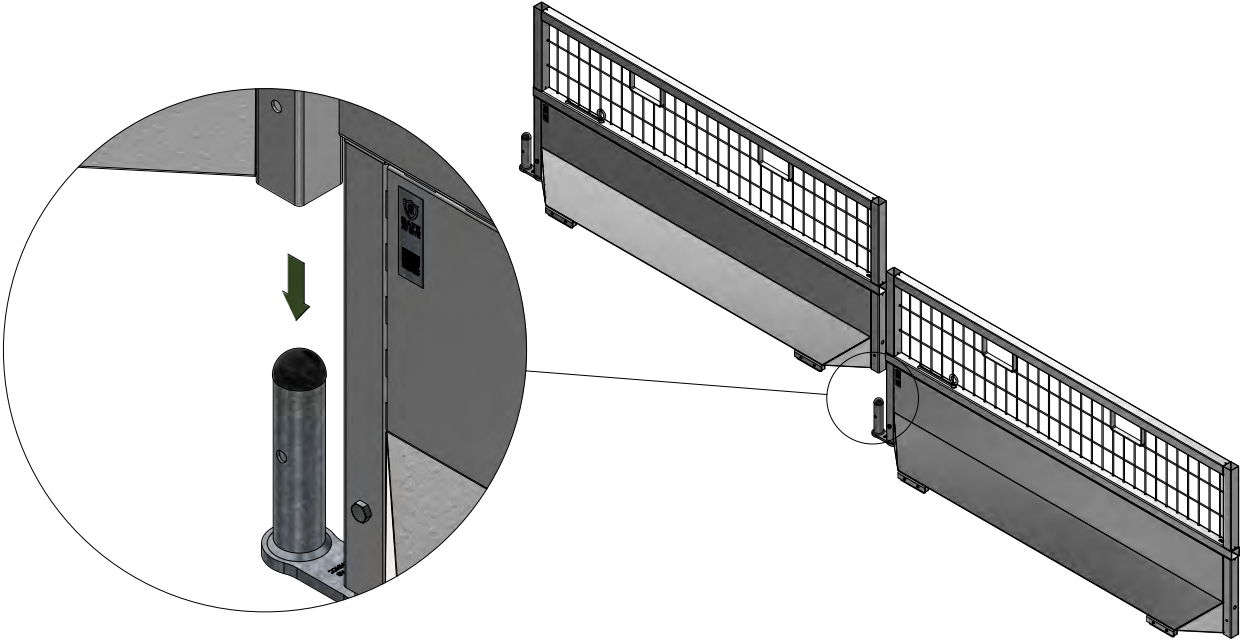
Acc. to 2006/42/EG



8,6 kg

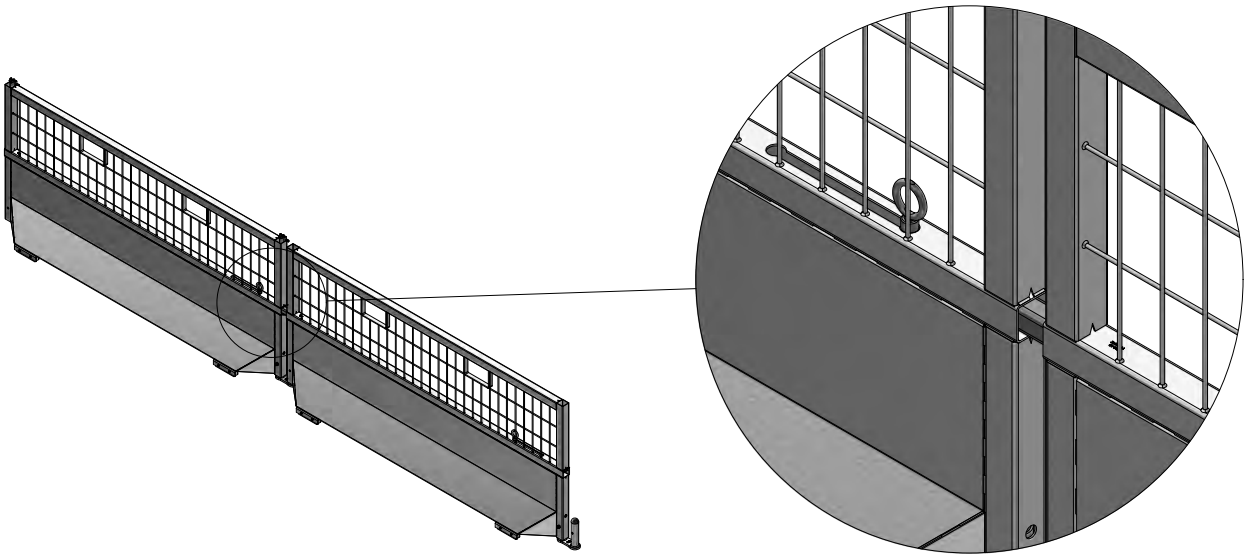
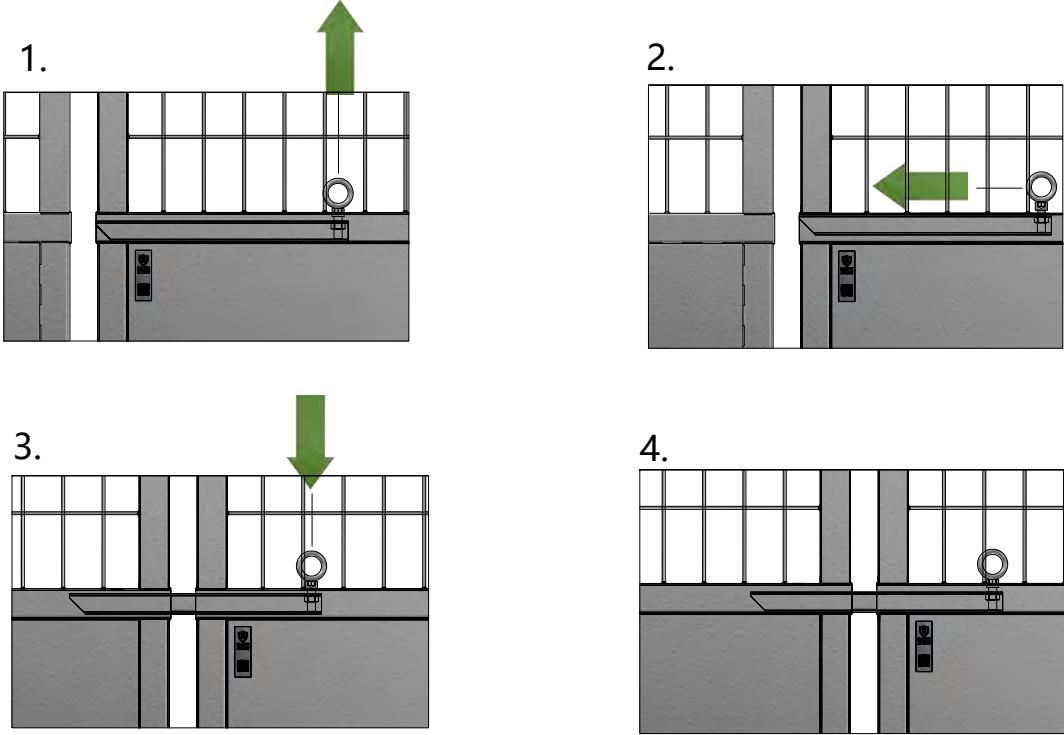


# Installation

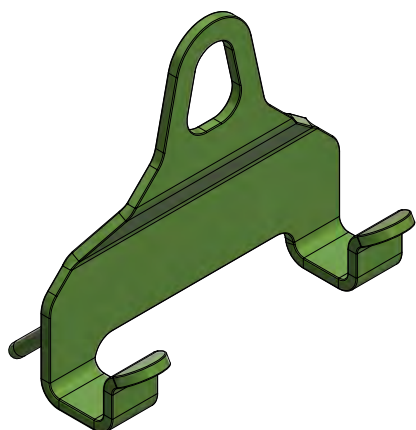


# Straight sections

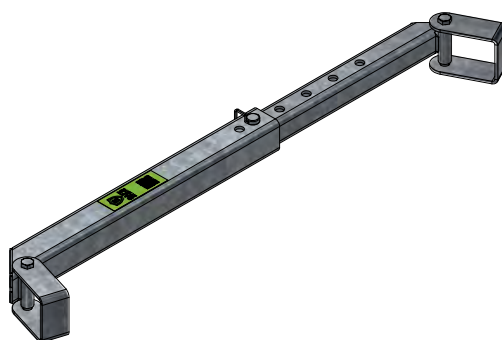
Locking Bar is activated when installing straight sections for increased strength and stability.



# Accessories



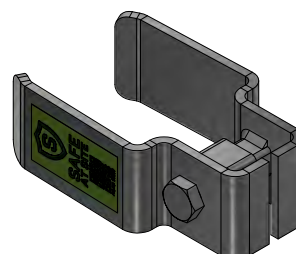
City Lifting Hook  
Art. nr 10200



Corner Beam  
Art. nr 10078



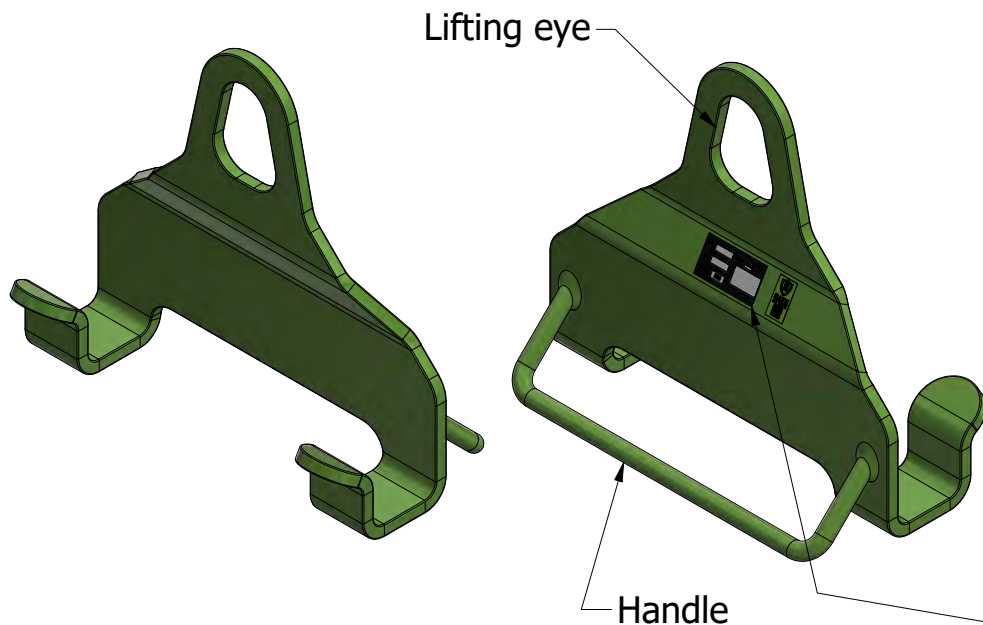
City GC Attachment  
Art. nr 10120



City X3 Attachment  
Art. nr 10125

# Accessories

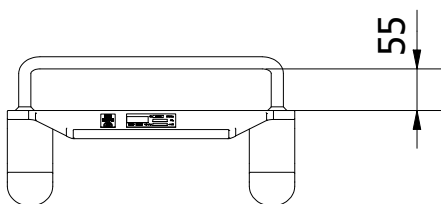
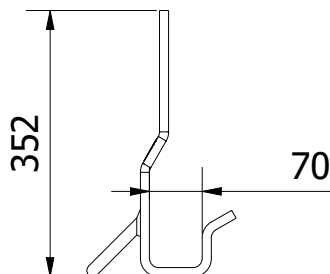
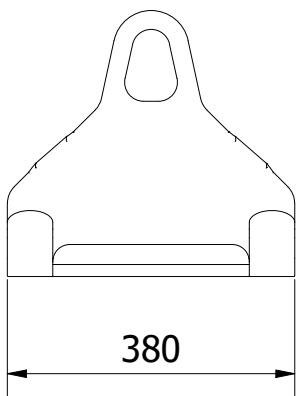
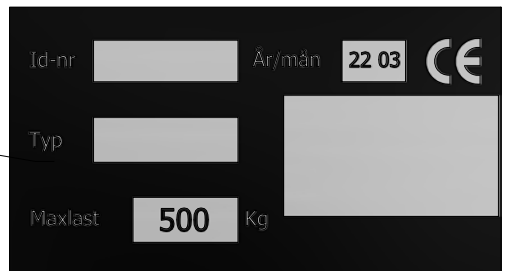
## Lifting Hook



City Lifting Hook  
 Art. nr 10200  
 Max Lifting capacity 500 kg

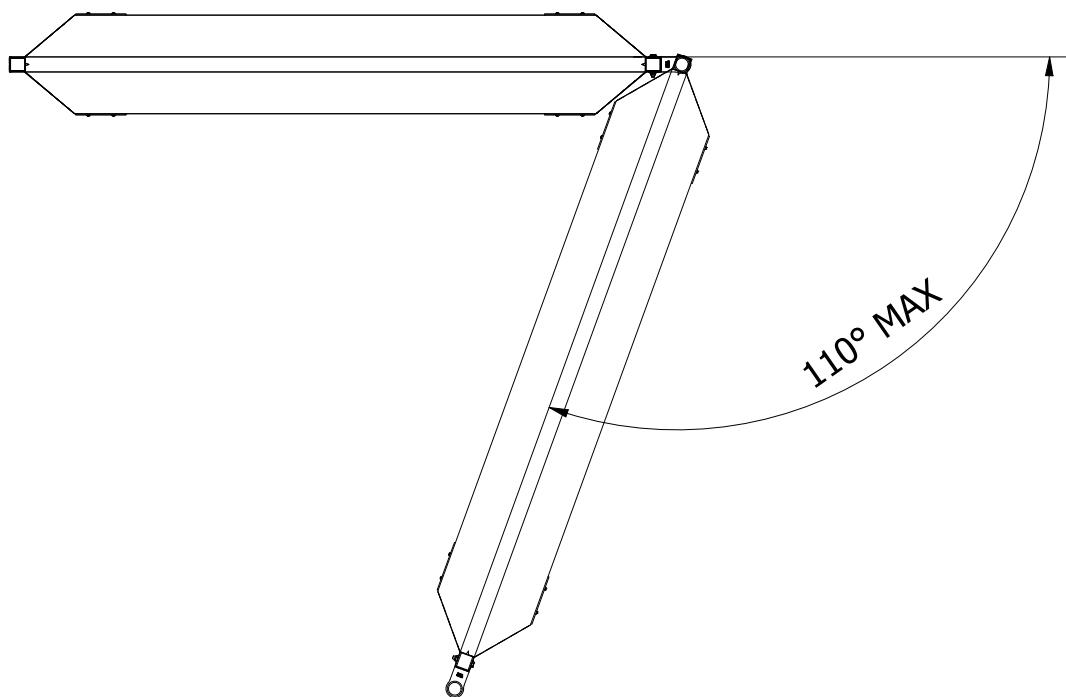
CE Enligt 2006/42/EG

kg 8,6 kg

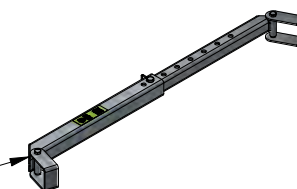


# Accessories

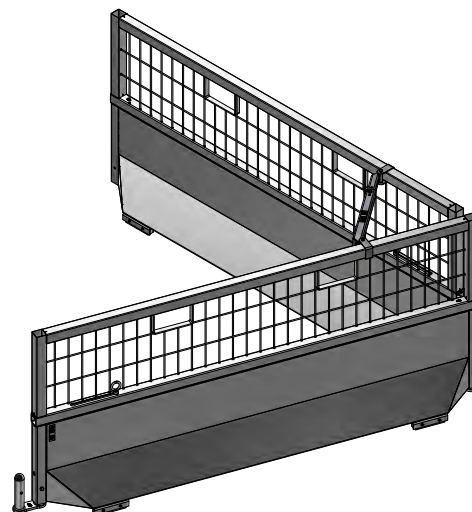
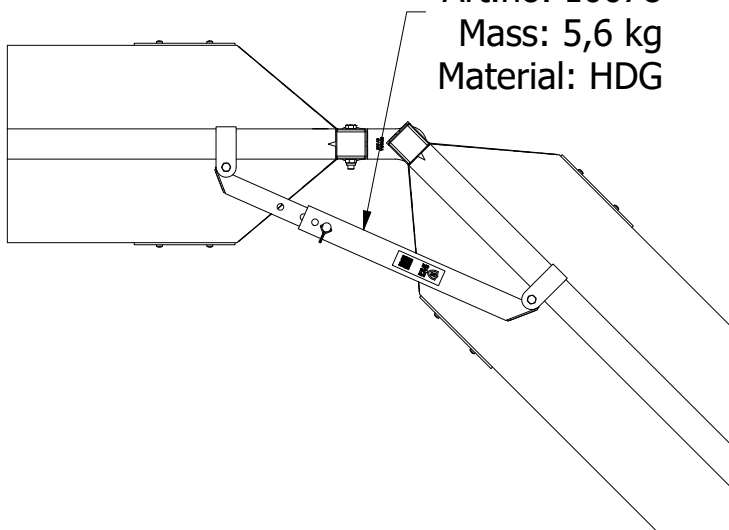
## Corners



Use Corner Beam to strengthen sections in corners.



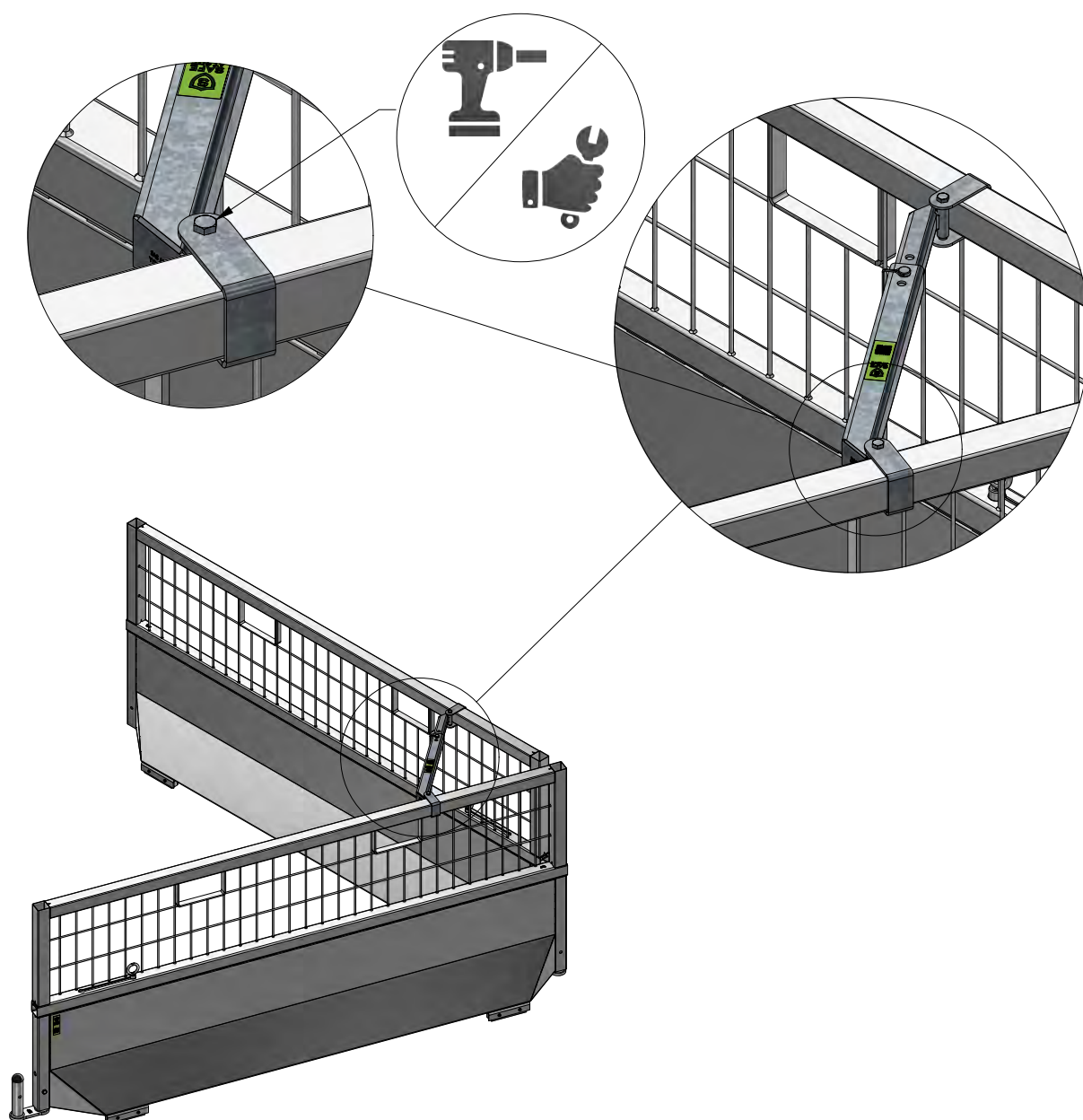
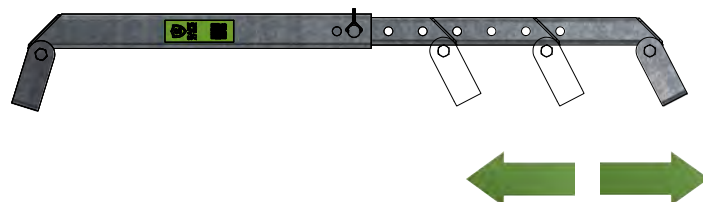
Corner Beam  
 Art.no. 10078  
 Mass: 5,6 kg  
 Material: HDG



# Accessories

## Corners

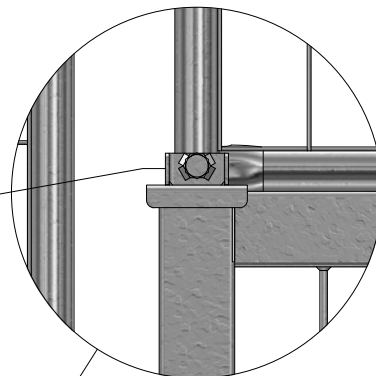
Adjust the size of the Corner Beam using the locking pins. Place it in the corner section and secure it.



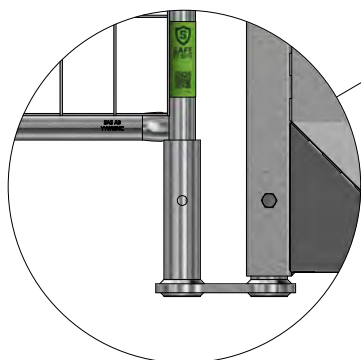
# Accessories

## City GC Attachment

City GC Attachment  
Art.no. 10120  
Mass: 0,5 kg  
Material: HDG

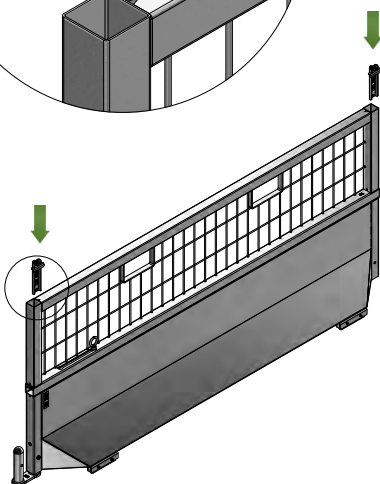
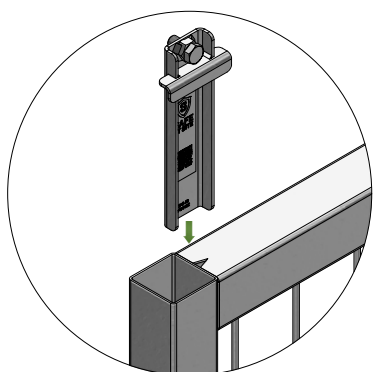


ProGuard GC Barrier  
Art.no. 10000  
Mass: 16,3 kg  
Material: HDG

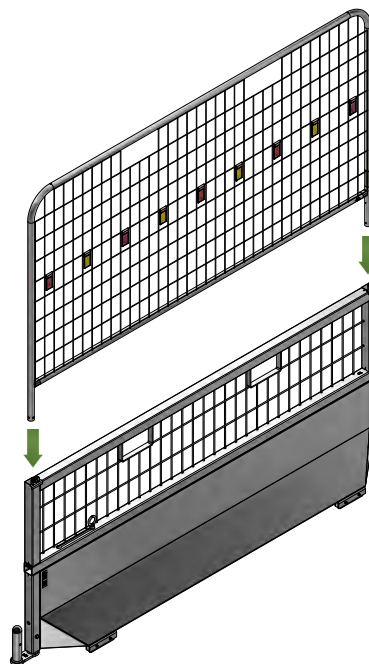


# Accessories

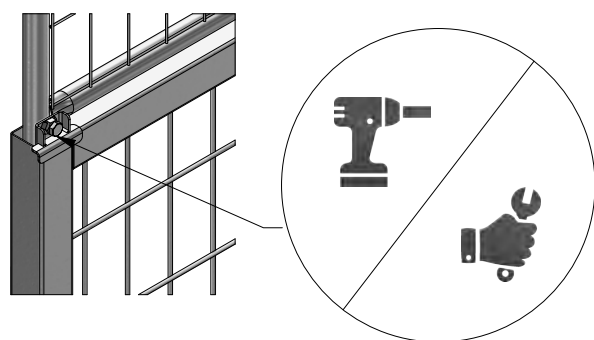
## GC Barrier



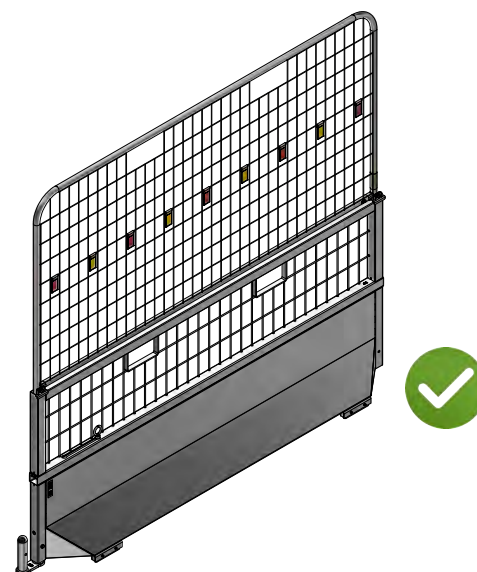
1.



2.



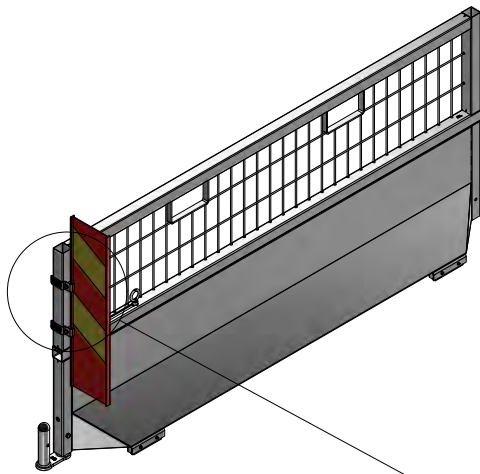
3.



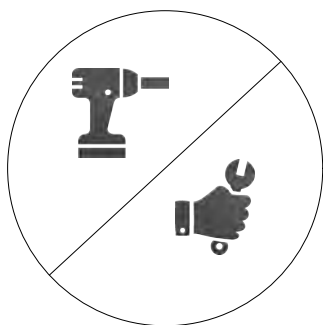
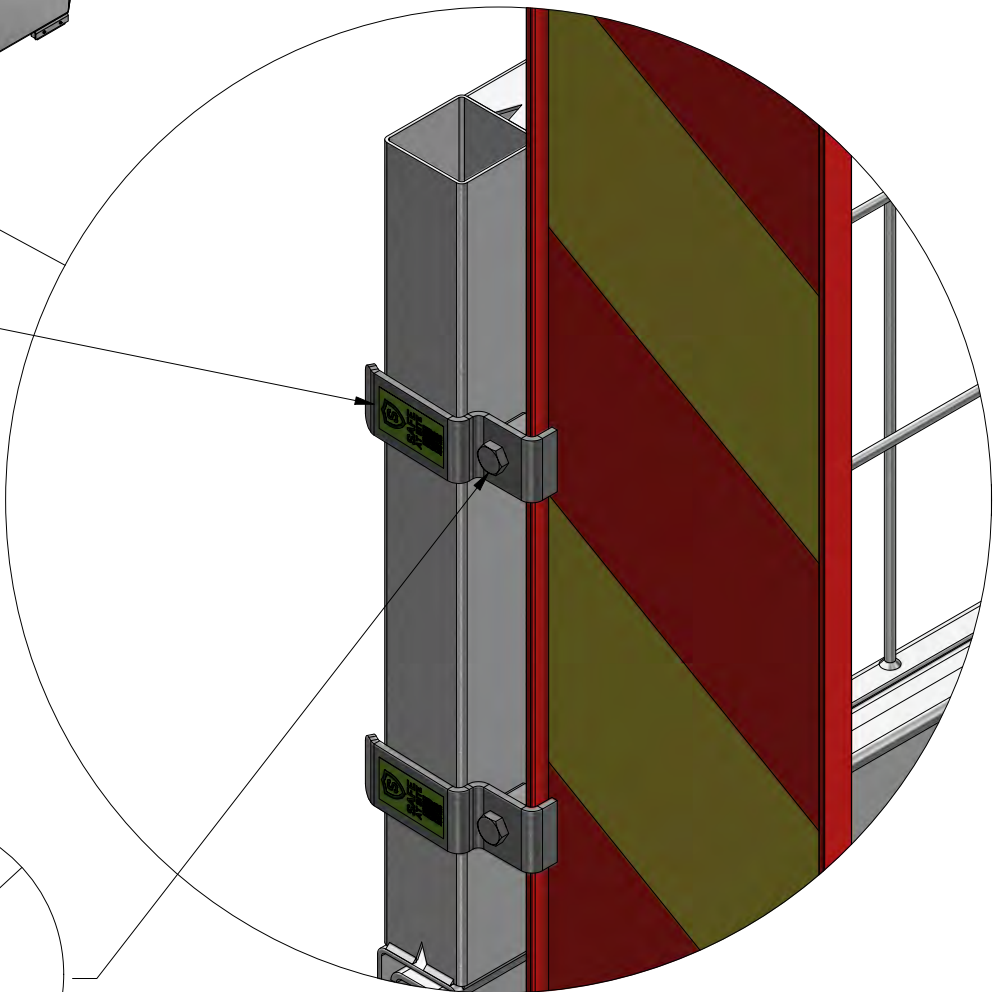
4.

# Accessories

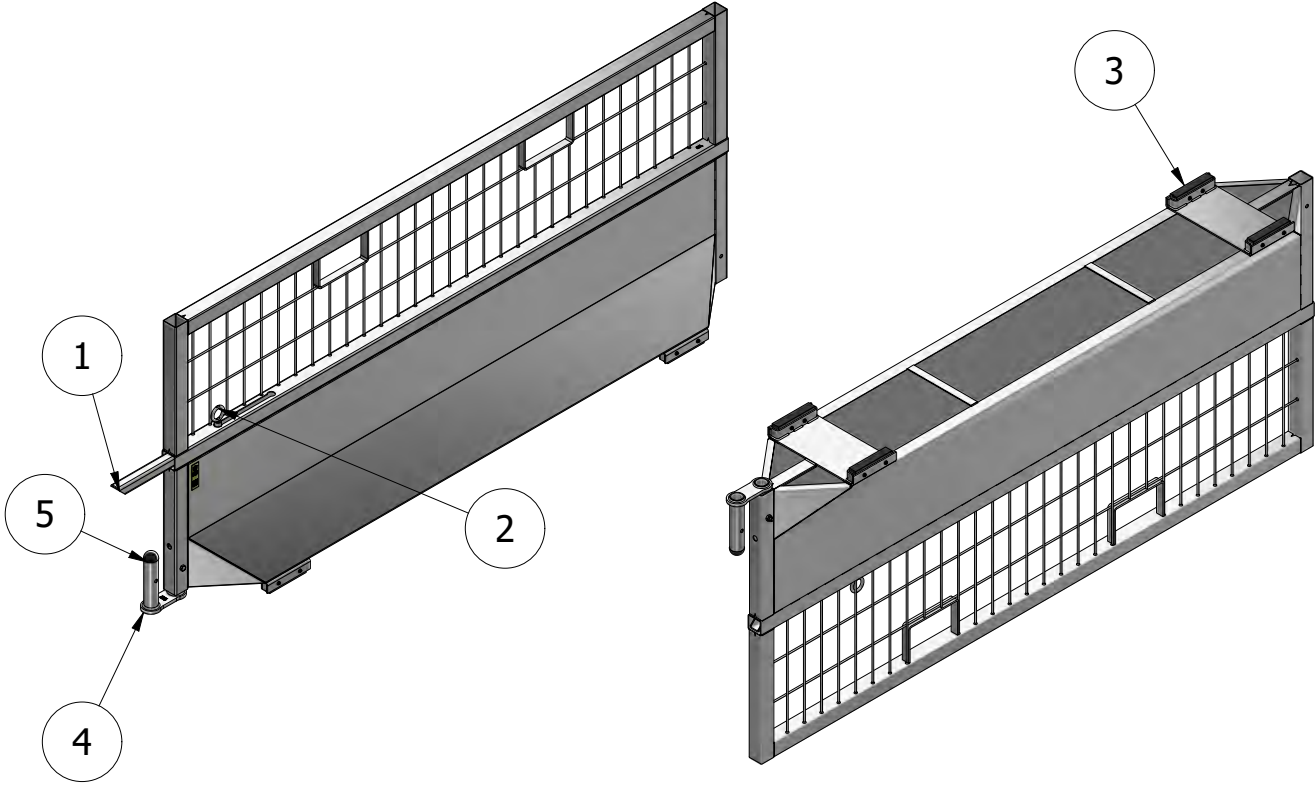
## City X3 Attachment



City X3 Attachment  
Art. nr 10125



# Spare parts



NR.	PRODUCT	ART. NR.	MATERIAL
1	Locking Bar	10051	HDG
2	Eye Bolt	10052	HDG
3	Rubber Foot - 170 mm	10053	Rubber
4	Link	10054	HDG
5	Plastic Plug Ø48 mm,	90031	Polyethylene